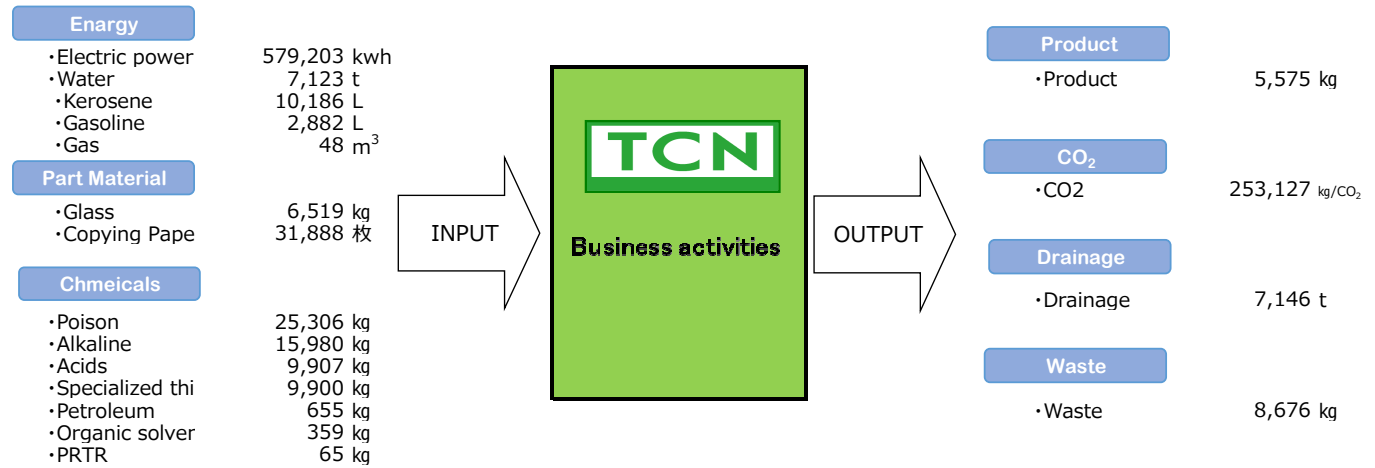
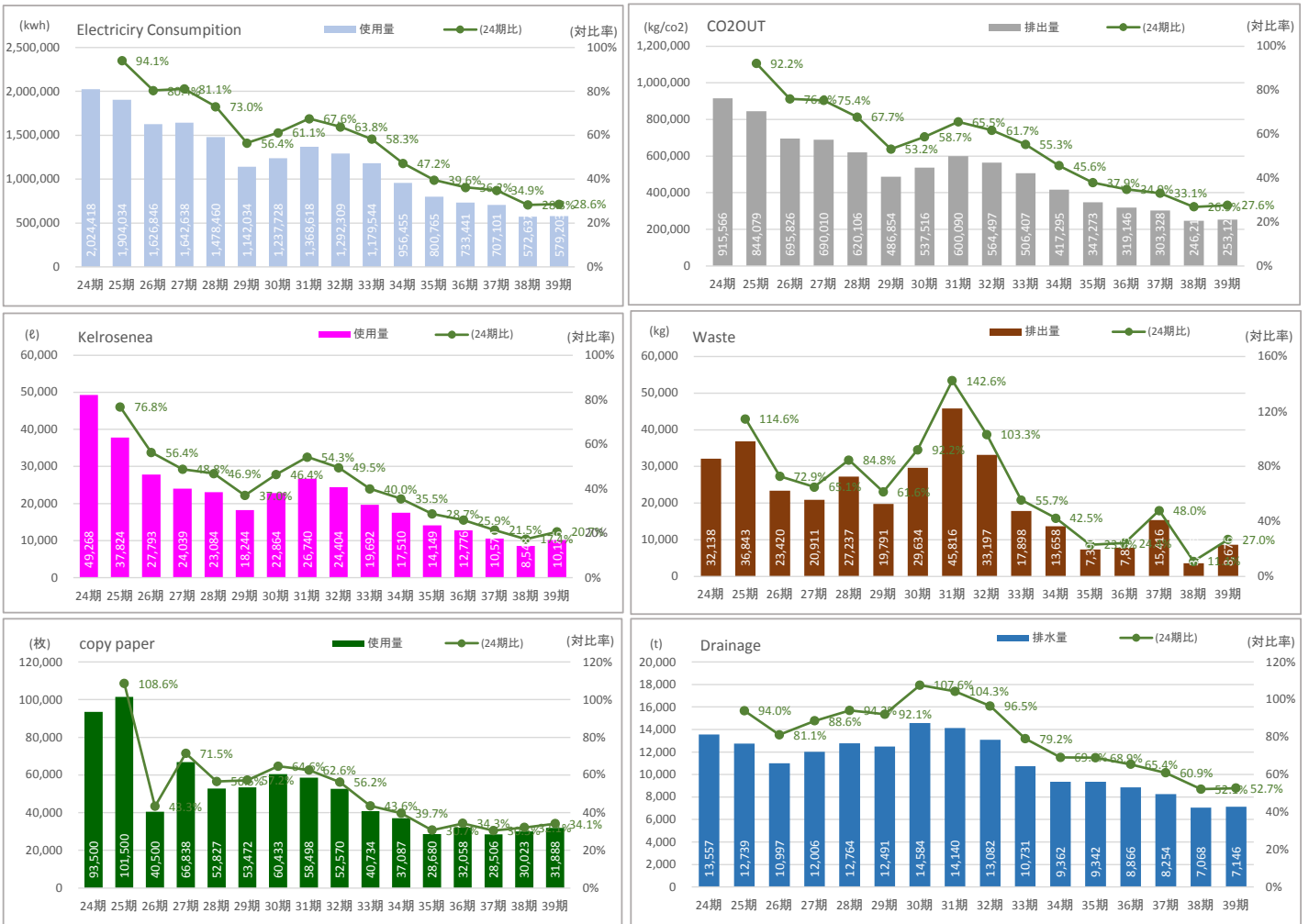


『Environmental load material balance』

Material balance represents the amount of energy, and the environmentally hazardous substances (OUTPUT) generated by those activities.
 (The38 period (Sep 2021~Aug 2022))

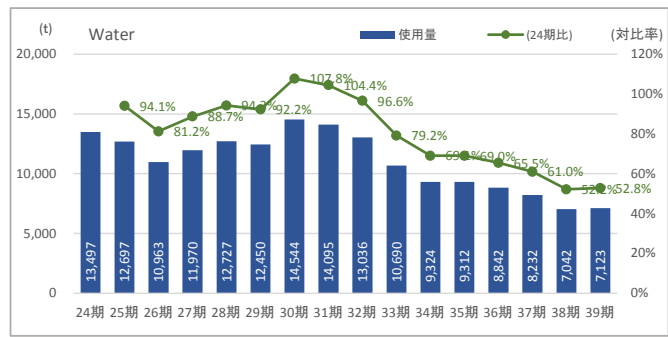


『Environmental activity results (actual values)』



(The main active contents for reduction)

- 1) The electric power amount of consumption
 :Wasteful reduction by an operating method and reconsideration of operating hour of a compressor and productive facilities.
 Introduction of a solar light generating system, LED Light.
- 2) The kerosene amount of consumption
 : Wasteful reduction by operating hour reconsideration of washing machine. (Source of heat for warm water of washing machine)
- 3) Drainage
 :Wastewater reduction by operating hour reconsideration of washing machine.
- 4) Wastes
 : Recycling-ization of trash of resources. Improvement of yield.
- 5) Copying Paper
 : We used the back paper and promotion activity of electronic file-ization.



ne)