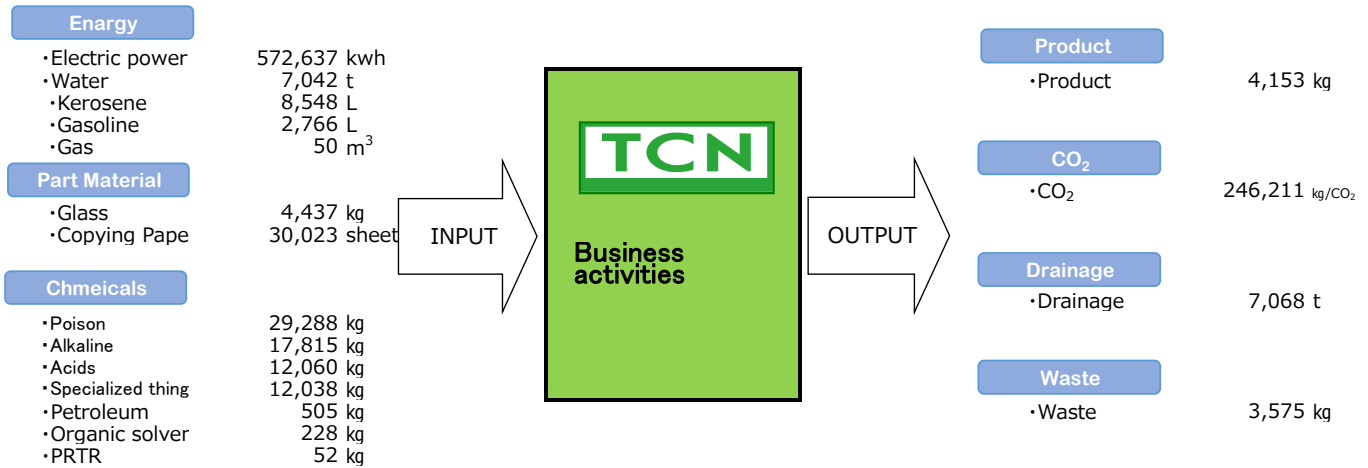


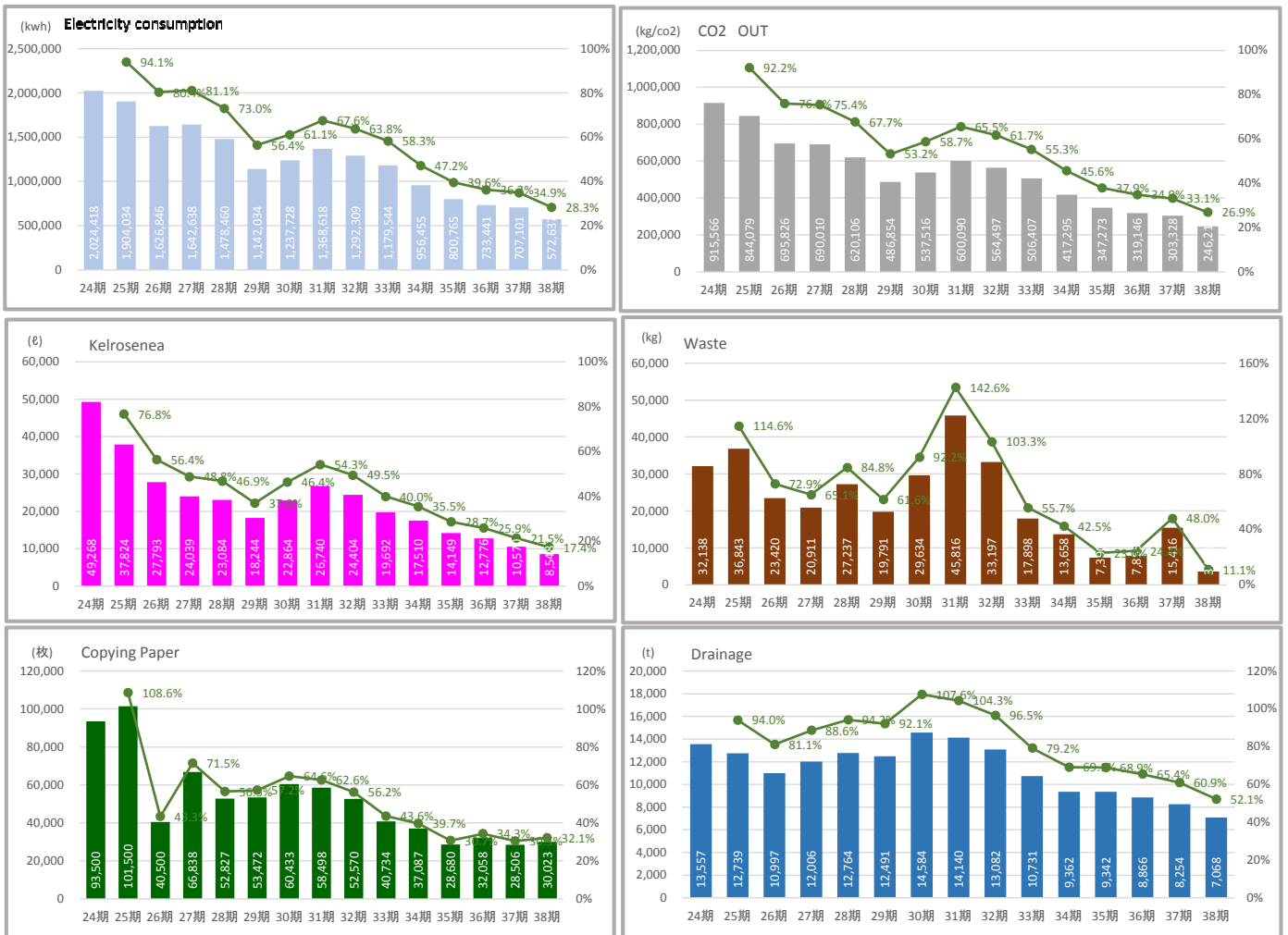
『Environmental load material balance』

Material balance represents the amount of energy and resources input (INPUT) in business activities and the environmentally hazardous substances (OUTPUT) generated by those activities.

[The37 period (Sep 2019~Aug 2020)]



『Environmental activity results (actual values)』



(The main active contents for reduction)

- The electric power amount of consumption
:Wasteful reduction by an operating method and reconsideration of operating hour of a compressor and productive facilities.
Introduction of a solar light generating system, LED Light.
- The kerosene amount of consumption
: Wasteful reduction by operating hour reconsideration of washing machine. (Source of heat for warm water of washing machine)
- Drainage
:Wastewater reduction by operating hour reconsideration of washing machine.
- Wastes
: Recycling-ization of trash of resources. Improvement of yield.
- Copying Paper
: We used the back paper and promotion activity of electronic file-ization.